

Prepared by the Instituto Geográfico Militar (IGM), Quito, Ecuador in collaboration with the National Geospatial-Intelligence Agency (NGA).

Prepared por el Instituto Geográfico Militar (IGM), Quito, Ecuador en colaboración con National Geospatial-Intelligence Agency (NGA).

- LEGEND: POPULATED PLACES, ROADS, RAILROADS, BOUNDARIES, MISCELLANEOUS CULTURAL FEATURES, RELIEF.

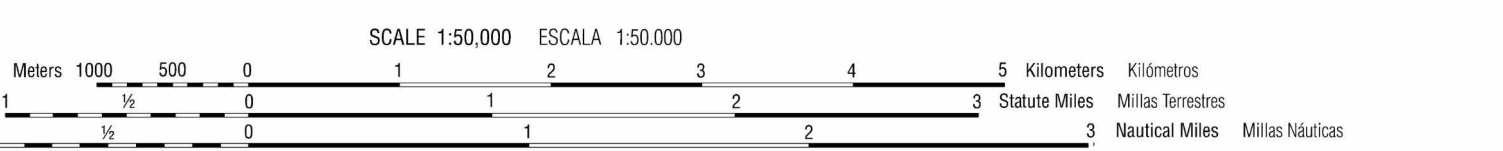
- SÍMBOLOS CONVENCIONALES: LUGARES POBLADOS, CAMINOS, FERROCARRILES, LÍMITES, RASGOS CULTURALES MISCELÁNEOS, VEGETACIÓN, POZA DE CACAO.

Planimetric information from aerial photography taken in 1978, 83 and radar imagery taken in June 2001.

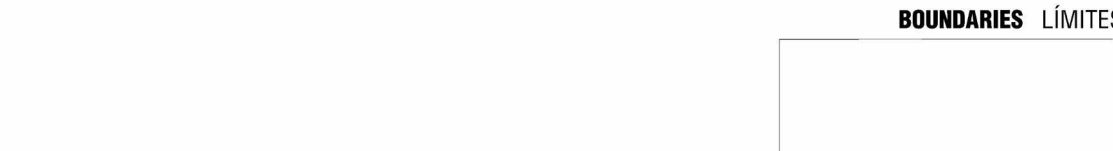
- NOTES: INFORMATION FROM AERIAL PHOTOGRAPHY, IN-BUILT-UP AREAS ONLY THROUGH ROUTES ARE CLASSIFIED, THE WIDTH OF A LANE ON THIS MAP IS CONSIDERED TO BE AT LEAST 2.5 METERS WIDE.

Information from aerial photography taken in 1978, 83 and radar imagery taken in June 2001. Cartographic compilation completed in June 2006.

- CONVERSION GRAPH: METERS TO FEET, FEET TO METERS. GLOSSARY: Aproximadamente, primer orden administrativo, etc.



ELEVATIONS IN METERS, CONTOUR INTERVAL 20 METERS, ELEVACIONES EN METROS, INTERVALO DE CURVAS DE 20 METROS. Includes coordinate conversion and grid information.



SLOPE GUIDE, ELEVATION GUIDE, WGS 84. Includes slope percentage to degree conversion and elevation guide maps.