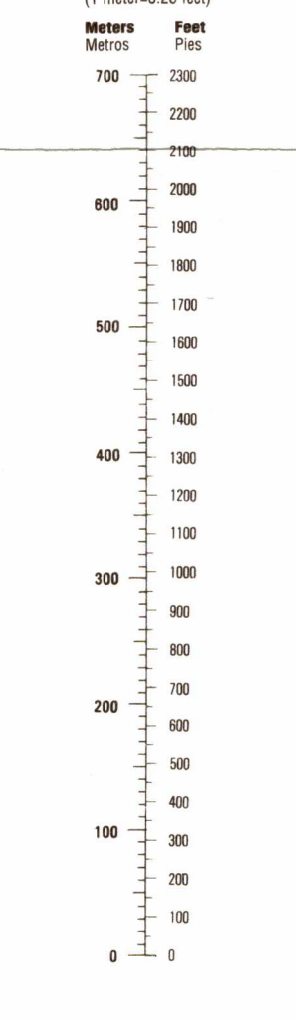


CONVERSION GRAPH



SCALE 1:50,000



ELEVATIONS IN METERS

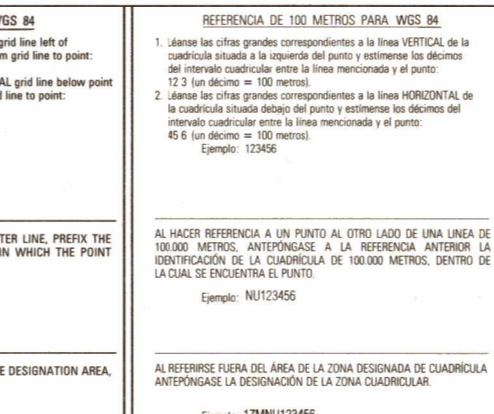
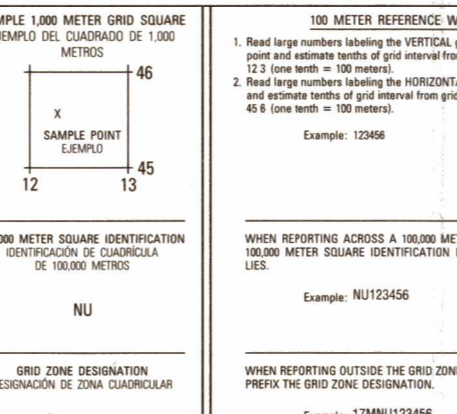
CONTOUR INTERVAL 20 METERS

ELLIPSOID: WORLD GEODETIC SYSTEM 1984 GRID: 1,000 METER, UTM ZONE 17 PROJECTION: TRANSVERSE MERCATOR DATUM: MEDELLIN DATUM WORLD GEODETIC SYSTEM (WGS) FIELD ASSIGNATION: I.G.M. 1980 AND 1986 PRINTED BY: INSTITUTO GEOGRAFICO MILITAR 9-99

ELEVACIONES EN METROS

INTERVALO DE CURVAS DE 20 METROS

ELLIPSOIDE: SISTEMA GEODESICO MUNDIAL 1984 CUADRICULA: 1.000 METROS, UTM ZONA 17 TRANSVERSERA DE MERCATOR DATUM: MEDIO DEL MAR SISTEMA GEODESICO MUNDIAL (WGS) CLASIFICACION DE CAMPO: I.G.M. 1980 Y 1986 IMPRESO POR: INSTITUTO GEOGRAFICO MILITAR 9-99



USERS SHOULD PREFER CORRECTIONS, ADDITIONS, OR COMMENTS TO THE NIMA CUSTOMER HELP DESK: 1-800-455-2889; COMMERCIAL: 314-280-5032; OSN 490-5032; OR WRITE TO: DIRECTOR, NATIONAL IMAGERY AND MAPPING AGENCY, ATTN: CDD, MAIL STOP P-37, 4600 SANDHURST ROAD, BETHESDA, MD 20816-5003



Prepared by the Instituto Geografico Militar (I.G.M.), Quito, Ecuador, in collaboration with the National Imagery and Mapping Agency.



Preparado por el Instituto Geografico Militar (I.G.M.), Quito, Ecuador, en colaboración con National Imagery and Mapping Agency.

LEGEND

Legend table with symbols and descriptions for populated places, roads, railroads, boundaries, and vegetation.

Compiled in 1998 by stereogrammetric methods from aerial photography taken in 1990 and 1996. Cartographic compilation completed in 1999.

Compilado en 1998 por métodos estereofotogramétricos con fotografías aéreas tomadas en 1990 y 1996. Compilación cartográfica terminada en 1999.

NOTES

IN BUILT-UP AREAS ONLY THROUGH ROUTES ARE CLASSIFIED. EN AREAS DESARROLLADAS SOLAMENTE SE CLASIFICAN LAS RUTAS/TRONCALIAS.

THE WIDTH OF A LINE ON THIS MAP IS CONSIDERED TO BE AT LEAST 2.5 METERS WIDE. UNA LÍNEA EN ESTE MAPA SE CONSIDERA COMO UN MÍNIMO DE 2.5 METROS DE ANCHO.

CAUTION: NOT ALL TELEPHONE AND ELECTRIC SERVICE LINES ARE SHOWN. ADVERTENCIA: NO TODAS LAS LÍNEAS DE SERVICIO Y ELÉCTRICAS SE MUESTRAN.

COORDINATE CONVERSION WGS 84 TO PSAD 56. GRID: ADD 248 m. E; ADD 386 m. N. GEOGRAPHIC: SUBTRACT 08.7° LONG; SUBTRACT 12.0° LAT. CONVERSION DE COORDENADAS WGS 84 A PSAD 56. CUADRICULA: SUMAR 248 m. E; SUMAR 386 m. N. GEOGRAFICA: RESTAR 08.7° LONG; RESTAR 12.0° LAT.

GLOSSARY

Glossary table with Spanish and English terms for geographical features like canal, mangrove, and river.

LIMITED DISTRIBUTION: Distribution authorized to Department of Defense (DoD) IAW 10 U.S.C. 3119 & 2786. Release authorized in U.S. DoD contractors IAW 48 C.F.R. 1252.245-7000. Refer other requests to Headquarters, NIMA, ATTN: Release Officer, Stop A-10. Destroy as 'For Official Use Only'. Removal of this caveat is prohibited.

DISTRIBUCION LIMITADA: Distribucion autorizada al Departamento de Defensa (DoD) IAW 10 U.S.C. 3119 & 2786 y a personas contratadas por este IAW (48 C.F.R. 1252.245-7000). Enviar otras solicitudes a Headquarters, NIMA, ATTN: Release Officer, Stop A-10. Destruirse como 'Para uso oficial solamente'. Esta prohibido remover este aviso.

COMPILED COMPILACION

Table showing compilation years 1990 and 1996.

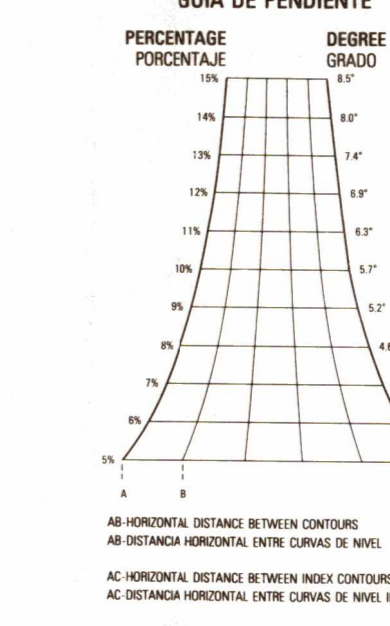
BOUNDARIES LÍMITES

Table showing boundaries for Provincia de Manabí.

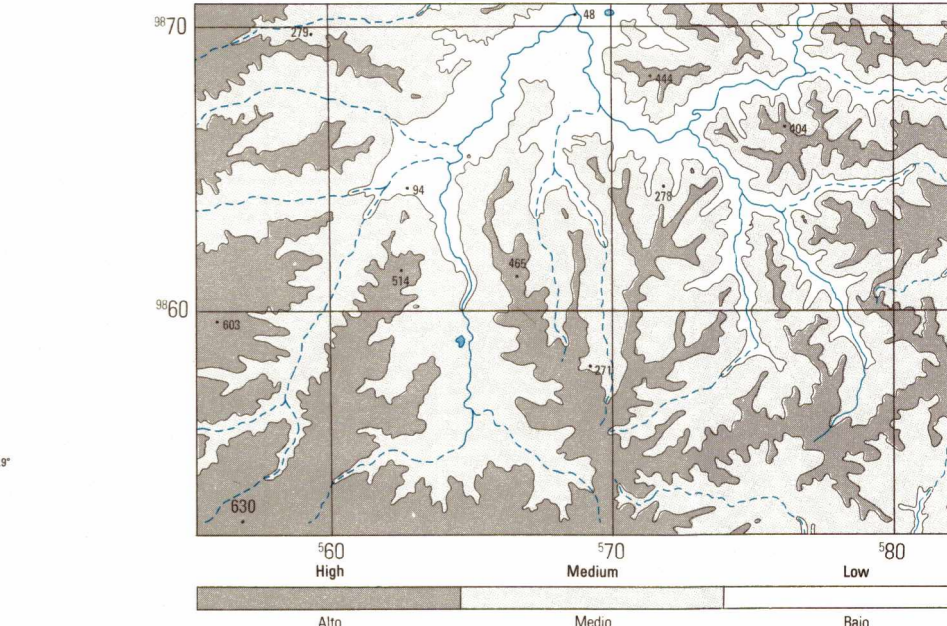
ADJOINING SHEETS HOJAS ADYACENTES

Table showing adjacent sheet numbers 3490 I, II, III, IV and 3589 I, II, III, IV.

SLOPE GUIDE



ELEVATION GUIDE



THIS MAP IS RED LIGHT READABLE ESTE MAPA ES LEGIBLE BAJO LUZ ROJA. NSN 7643014656932 NIMA REF. NO. J721X35903