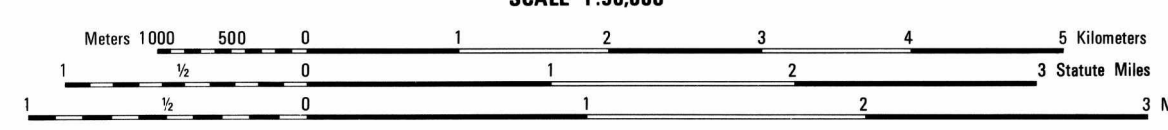
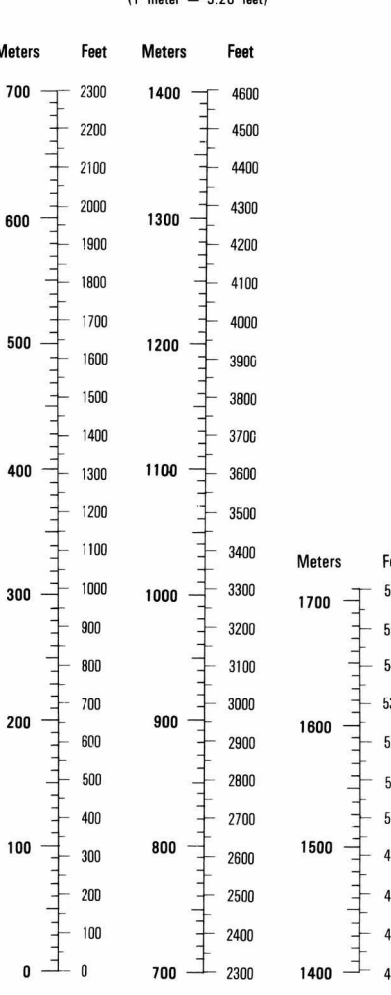


CONVERSION GRAPH GRÁFICO DE CONVERSIÓN



NOTES NOTAS

ON THIS MAP A LINE IS GENERALLY CONSIDERED AS BEING 8-12 FEET (2.5-3.8 METERS) WIDE. EN ESTE MAPA UNA LÍNEA TIENE GENERALMENTE UNA ANCHURA DE 8-12 PIES (2.5-3.8 METROS).

ELEVATIONS IN METERS

CONTOUR INTERVAL 20 METERS INTERVALO DE CURVAS 20 METROS

Table with 4 columns: SPHEROID GRID, PROJECTION VERTICAL DATUM, HORIZONTAL DATUM, and CLARKE 1866 TRANSVERSA DE MERCATOR A 1,000 METROS. Includes grid examples and projection details.

Table with 2 columns: 100 METER REFERENCE and 100,000 METER SQUARE IDENTIFICATION. Includes diagrams and instructions for reporting coordinates.

Table with 2 columns: GLOSSARIO and GLOSSARY. Lists geographical features in Spanish and English, such as Agua, Bosque, and Cerro.

LEGEND

Table with 2 columns: SIGNOS CONVENCIONALES and CAMINOS. Lists symbols for roads, railways, and other infrastructure.

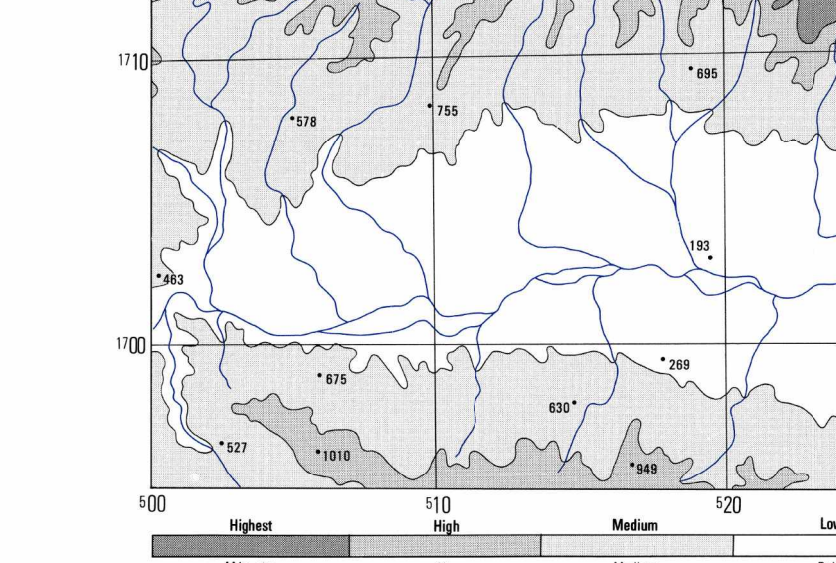
BOUNDARIES

Table with 2 columns: LIMITES and DEPARTAMENTO. Lists symbols for administrative boundaries.

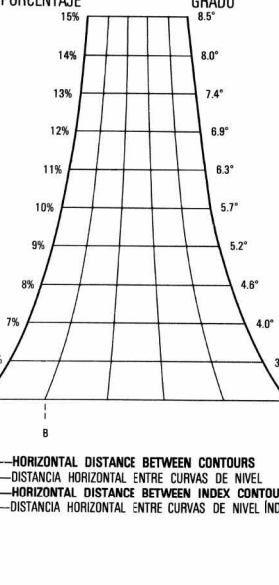
BOUNDARIES LIMITES

Table with 2 columns: DEPARTAMENTO DE YORO and HOJAS ADYACENTES. Shows adjacent sheets and administrative divisions.

ELEVATION GUIDE GUÍA DE ELEVACIÓN



SLOPE GUIDE



THIS MAP IS RED-LIGHT READABLE LIMITED DISTRIBUTION

NSN 7643014052853 EDITION 2-DMA