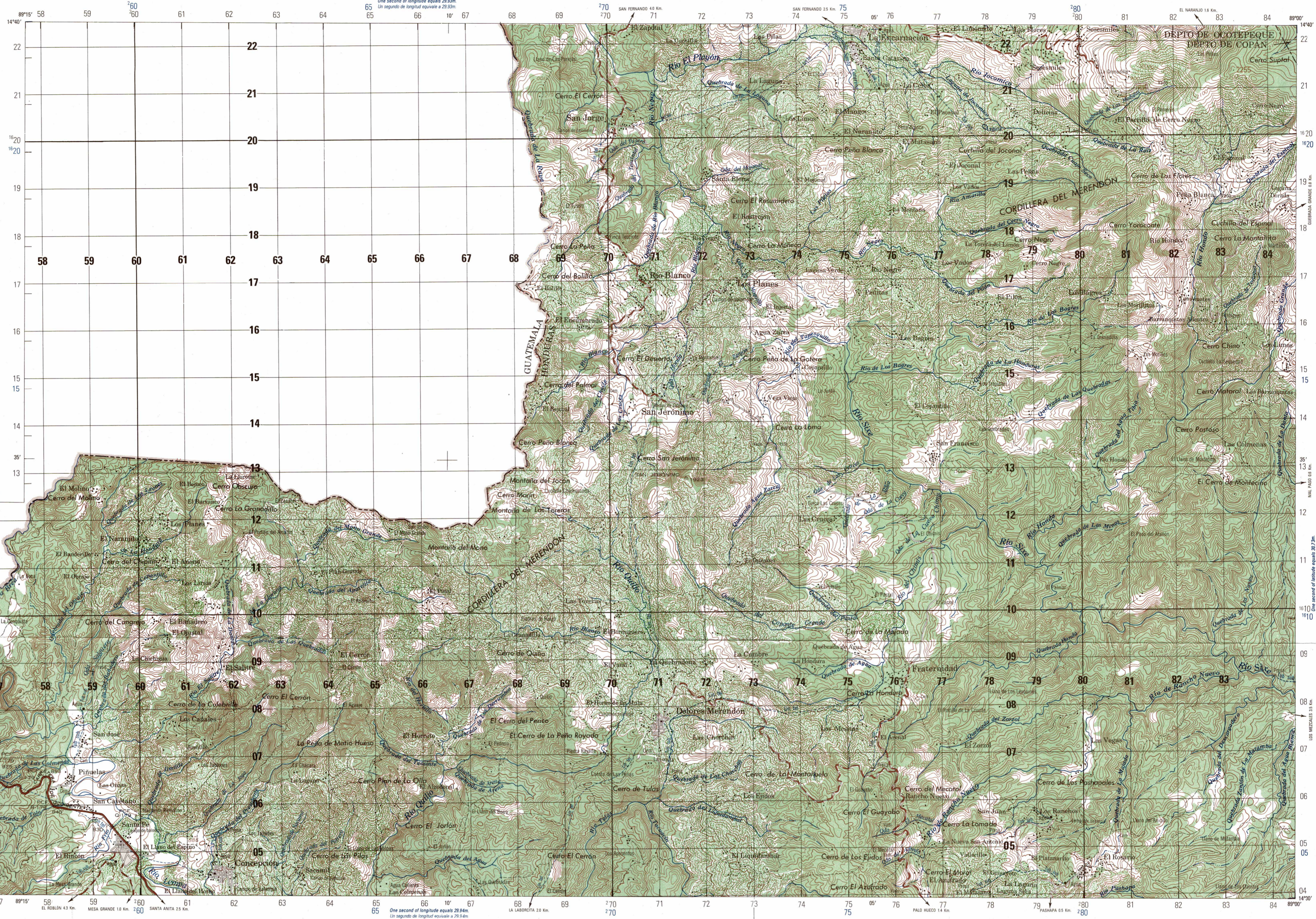
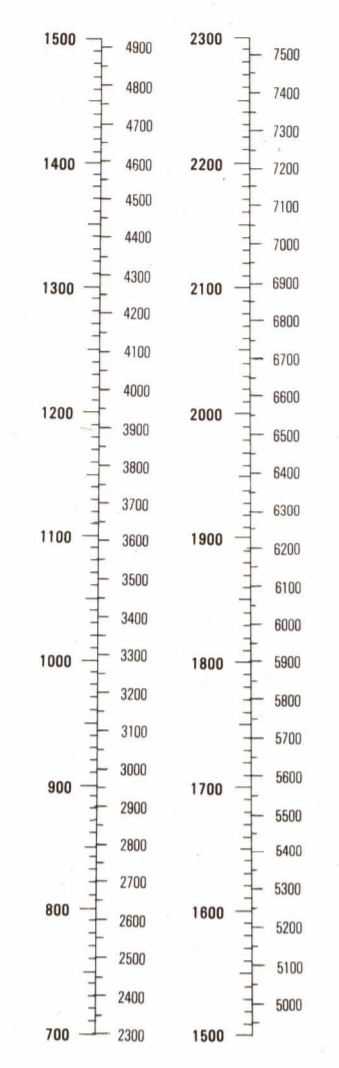


CONVERSION GRAPH
GRÁFICO DE CONVERSIÓN
(1 meter = 3.28 feet)
(1 metro = 3.28 pies)



Prepared by the Instituto Geográfico Nacional, Honduras in collaboration with the Defense Mapping Agency.

NOTES
CAUTION: NOT ALL TELEPHONE AND ELECTRIC SERVICE LINES ARE SHOWN.



LEGEND
ROADS: Divided highway, All weather, Two or more lanes wide, etc.
RAILROADS: Normal gauge, Station, etc.
POPULATED PLACES: Built-up area, etc.
BOUNDARIES: International, etc.

GLOSSARY
Aduana, custom house; Agua, water; Antena, antenna; Campesino, etc.

GRID AND HORIZONTAL DATUM, PROJECTION, and SAMPLE GRID SQUARE information.

GRID CONVERGENCE, COORDINATE CONVERSION, and SLOPE GUIDE information.

BOUNDARIES, ADJOINING SHEETS, and ELEVATION GUIDE information.