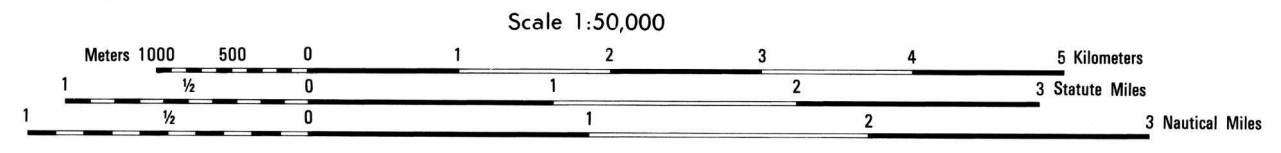


Prepared and published by the Defense Mapping Agency
Hydrographic/Topographic Center, Washington, D.C.



LEGEND
On this map a line is generally considered as being 8-12 feet (2.5-3.6 meters) in width
EN ESTE MAPA UNA LÍNEA TIENE CONSIDERADO UNA ANCHURA DE 8-12 PIES (2.5-3.6 METROS)

Table with 2 columns: ROAD/CAMINO and CAMINOS. It lists various road types and their symbols, such as 'Dual highway', 'Autopista', 'All weather, hard surface', etc.

SIGNOS CONVENCIONALES
REDACCION CARTOGRAFIA EN 1983 DESDE LAS MEJORES FUENTES DE INFORMACION

Table with 2 columns: Power transmission line and other symbols. It lists symbols for power lines, schools, cemeteries, and other landmarks, such as 'Power transmission line', 'Escuela', 'Cementerio', etc.

GLOSSARY—GLOSARIO

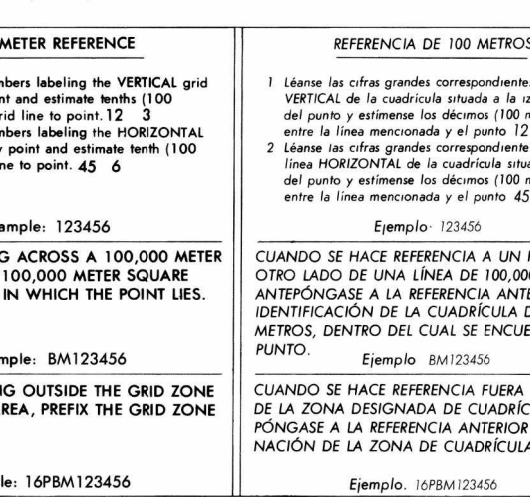
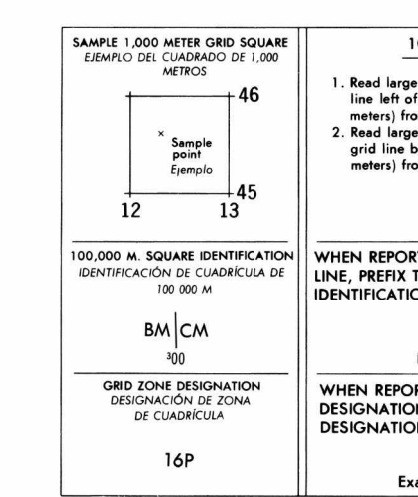
Table with 2 columns: English and Spanish terms. It lists various geographical and man-made features, such as 'Alberca', 'Barrio', 'Campo de futbol', etc.

CONTOUR INTERVAL 20 METERS
SUPPLEMENTARY CONTOURS 10 METERS

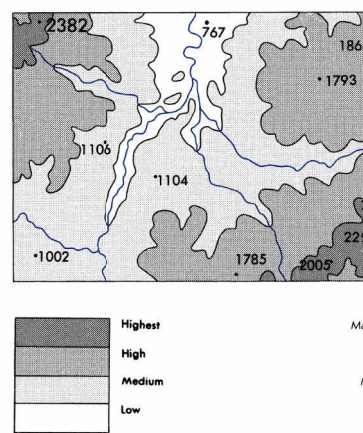
Table with 2 columns: SPHEROID and GRID. It lists the Clarke 1866 spheroid and the 1000 Meter Lambert grid used for the map.

INTERVALO DE CURVAS 20 METROS
CURVAS SUPLEMENTARIAS CADA 10 METROS

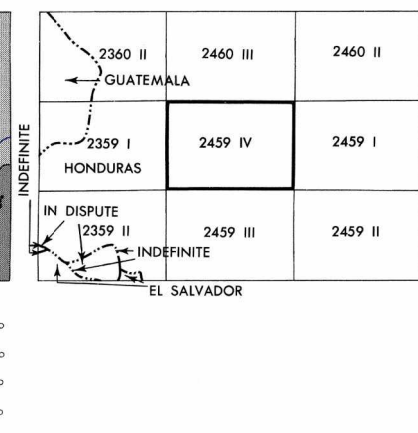
Table with 2 columns: ESFEROIDE and CUADRICULA. It lists the Clarke 1866 spheroid and the 1000 Meter Lambert grid used for the map.



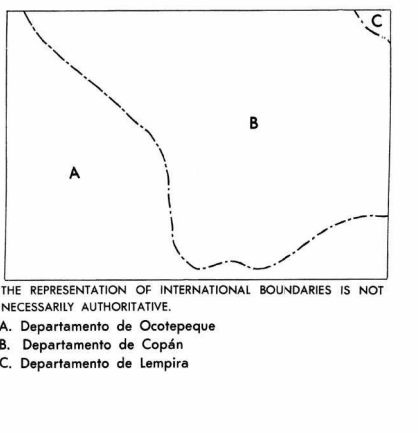
ELEVATION GUIDE
GUÍA DE ELEVACION



ADJOINING SHEETS
HOJAS ADYACENTES



BOUNDARIES
LÍMITES



1980
G.M. ANGLE
5° 19' 00" N
ANGULO C.M. DE 1980
5° 19' 00" N

LIMITED DISTRIBUTION: Distribution authorized to DoD, IAW 10 U.S.C. 11330 & 2796.
Release authorized to U.S. DoD contractors IAW 48 C.F.R. 1252.245-7000. Refer other requests to Headquarters, NIMA, ATTN: Release Officer, Stop P-25, Derry St., The Official Use Only. Removal of this cover is prohibited.

THIS MAP IS RED-LIGHT READABLE
USERS SHOULD REFER CORRECTIONS, ADDITIONS, AND COMMENTS TO THE NIMA CUSTOMER HELP DESK 1-800-455-0883 COMMERCIAL 1-341-900-1258 DOW 800-1258 OR WRITE TO ATTN: CDM MAIL STOP 37 NATIONAL MANGERY AND MAPPING AGENCY 4800 SANGAMORE ROAD, BETHESDA, MD 20815-5003