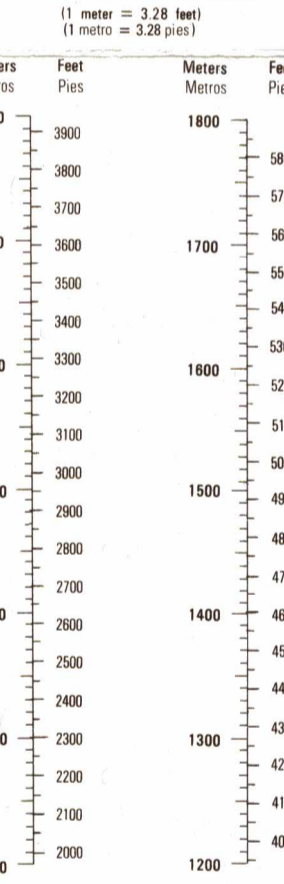




CONVERSION GRAPH GRÁFICO DE CONVERSIÓN



Prepared by the Instituto Geográfico Nacional, Honduras in collaboration with the Defense Mapping Agency.

NOTES NOTAS

CAUTION: NOT ALL TELEPHONE AND ELECTRIC SERVICE LINES ARE SHOWN. ADVERTENCIA: NO TODAS LAS LÍNEAS TELEFÓNICAS Y DE DISTRIBUCIÓN ELÉCTRICA SE INDICAN.

THE WIDTH OF A LANE ON THIS MAP IS CONSIDERED TO BE A MINIMUM OF 2.5 METERS.

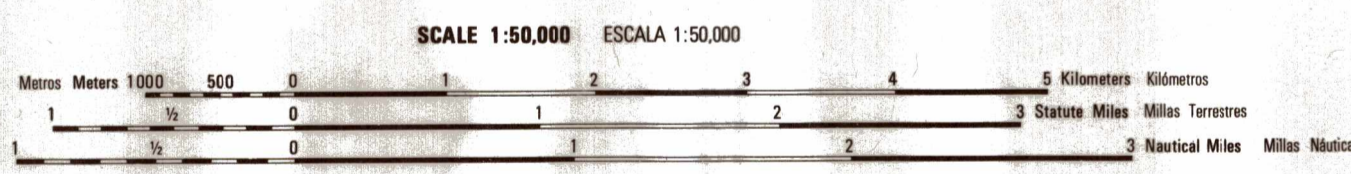
UNA VÍA EN ESTE MAPA SE CONSIDERA UN MÍNIMO DE 2.5 METROS DE ANCHO EN BUILT-UP AREAS ONLY THROUGH ROUTES ARE CLASSIFIED.

EN ÁREAS DESARROLLADAS SOLAMENTE SE CLASIFICAN LAS RUTAS TRONCALES.

Compiled by stereophotogrammetric methods from aerial photography taken in 1954, 56. Updated by photo-plasmometric methods in 1993 from aerial photography taken in 1980 and field classified in 1991.

GLOSSARY GLOSARIO

- Water: Antena, Cauce de balompé, soccer field, Cerro, Cuchilla, mountain ridge, Cumbre, summit, departamento, Finca, farm, ranch, Hacienda, Hda., estate, farm, rancho, Laguna, lake, Montaña, mountain, No hay, none, Pila, reservoir, Puente hámica, swing bridge, Pista, trail, Quebrada, Gda., stream, Río, river, Sierra, mountain range, Tubería subterránea, Tub. sub., underground pipeline, Vado, ford.

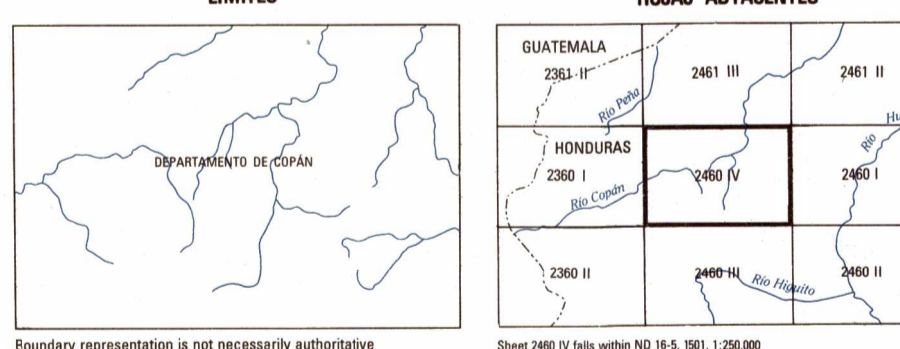


ELEVATIONS IN METERS ELEVACIONES EN METROS

CONTOUR INTERVAL 20 METERS SUPPLEMENTARY CONTOURS 10 METERS. INTERVALO DE CURVAS 20 METROS CURVAS SUPLEMENTARIAS CADA 10 METROS.

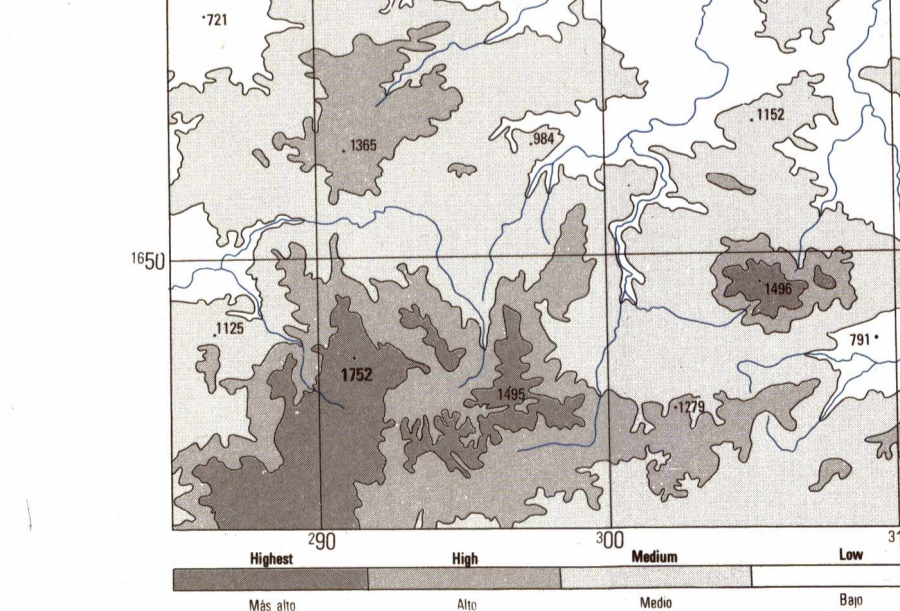
Grid and horizontal datum information, including sample grid diagrams and conversion instructions for various datums and scales.

BOUNDARIES LÍMITES



LIMITED DISTRIBUTION Distribution authorized to DoD, IAW 10 USC, §930 & 455; Release authorized to U.S. DoD contractors, IAW 48 CFR, 252.207-7002. Other uses require the permission of the NSA, ATTN: Release Office, Stop 35, Data or 'For Official Use Only.' Removal of this notice is prohibited.

ELEVATION GUIDE GUÍA DE ELEVACIÓN



Legend (CONVENCIONES) detailing symbols for roads, railways, drainage, boundaries, and populated places.