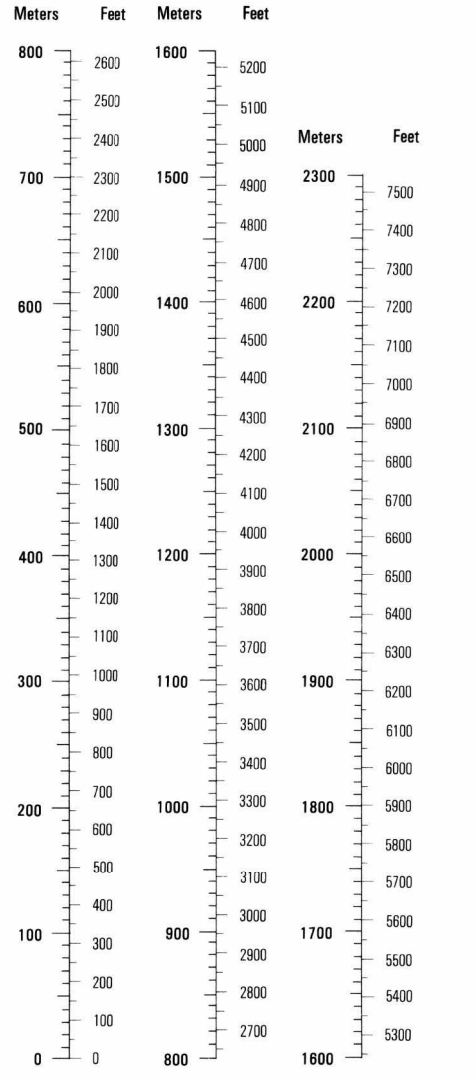


CONVERSION GRAPH GRÁFICO DE CONVERSIÓN (1 meter = 3.28 feet)



Prepared and published by the Defense Mapping Agency Hydrographic/Topographic Center, Washington, D.C.

REVISED IN 1986 FROM BEST AVAILABLE SOURCES REDACCIÓN CARTOGRÁFICA EN 1986 DE LAS MEJORES FUENTES DE INFORMACIÓN

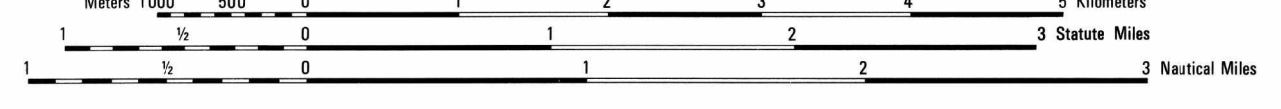
LEGEND SIGNOS CONVENCIONALES

Legend table with symbols for roads, railroads, boundaries, and other features.

NOTES NOTAS

ON THIS MAP A LINE IS GENERALLY CONSIDERED AS BEING 8-12 FEET (2.5-3.8 METERS) WIDE. EN ESTE MAPA UNA LÍNEA TIENE GENERALMENTE UNA ANCHURA DE 8-12 PIES (2.5-3.8 METROS).

SCALE 1:50,000



CONTOUR INTERVAL 20 METERS SUPPLEMENTARY CONTOURS 10 METERS

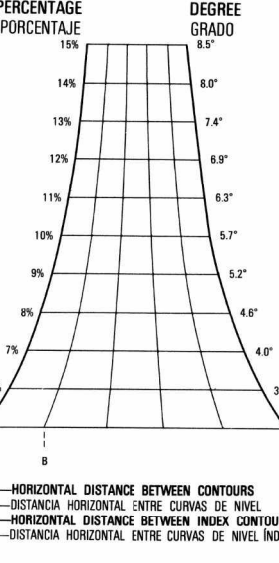
ESPERDIO 1:000 METER UTM ZONE 18 BLACK NUMBERED TICKS. CLARKE 1866 CUAQUICOLA A 1,000 METROS. NORTH LAMBERT GRID. TRANSEVERSA DE MERCATOR A 1,000 METROS. ZONA 18 LÍNEAS NEGRAS NUMERADAS. CLARKE 1866 CUAQUICOLA A 1,000 METROS. CUADRÍCULA HONDURAS AL NORTE. LAMBERT A 1,000 METROS. CURVAS AZULES NUMERADAS.

ELEVATIONS IN METERS

Grid square identification and magnetic azimuth conversion instructions.

GRID CONVERSION 070° 13 METERS. PARA CONVERTIR UN ACUAD. AZIMUTH TO A GRID AZIMUTH...

SLOPE GUIDE GUÍA DE PENDIENTE



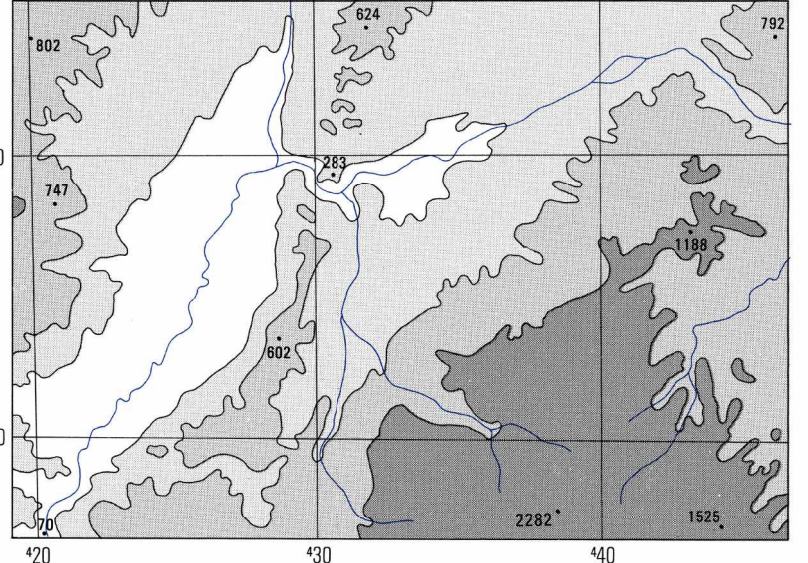
BOUNDARIES LÍMITES

DEPARTAMENTO DE YORO

ADJOINING SHEETS HOJAS ADYACENTES

Table of adjacent sheet numbers.

ELEVATION GUIDE GUÍA DE ELECCIÓN



THIS MAP IS RED-LIGHT READABLE