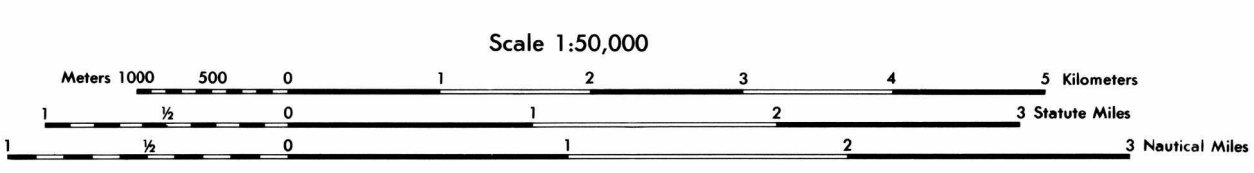


Prepared and published by the Defense Mapping Agency Hydrographic/Topographic Center, Washington, D.C. COMPILED IN 1985 FROM BEST AVAILABLE SOURCE MATERIALS. REDACCIÓN CARTOGRÁFICA HECHA EN 1985 DE LAS MEJORES FUENTES DISPONIBLES.

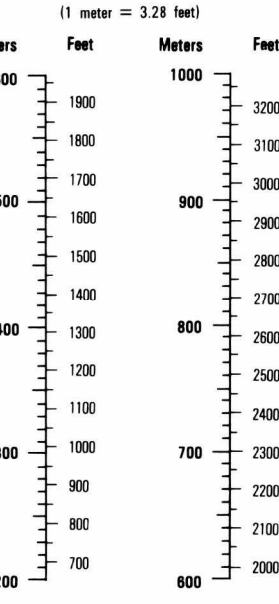


ELEVATIONS IN METERS

CONTOUR INTERVAL 20 METERS SUPPLEMENTARY CONTOURS 10 METERS

SPHEROID GRID 1:000 METER UTM ZONE 18 (BLACK NUMBERED LINES) 1:000 METER LAMBERT, HONDURAS SOUTH ZONE (BLUE NUMBERED TICKS) 1:000 METER LAMBERT, HONDURAS NORTH ZONE (GREEN NUMBERED TICKS) PROJECTION DATUM HORIZONTAL DATUM

CONVERSION GRAPH GRÁFICO DE CONVERSIÓN



Grid convergence information and instructions for users. Includes 'GRID CONVERGENCE 0°27' 16" WEST FOR CENTER SHEET' and instructions on how to use the grid for navigation and measurement.

NOTES NOTAS

IN DEVELOPED AREAS ONLY THROUGH ROADS ARE CLASSIFIED. EN LAS ÁREAS DESARROLLADAS, SOLAMENTE SE CLASIFICAN LAS VÍAS DIRECTAS. A LA VEZ EN ESTE MAPA SE CONSIDERA QUE UNA VÍA TIENE 2.5 METROS DE ANCHURA.

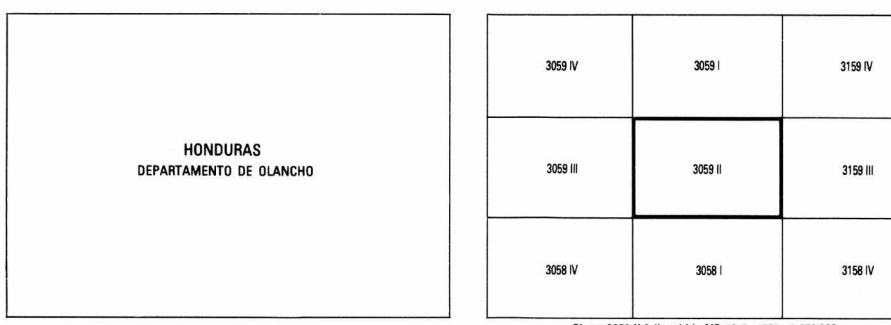
GLOSSARY GLOSARIO

Montañas mountains, Río river. A list of geographical features and their corresponding symbols on the map.

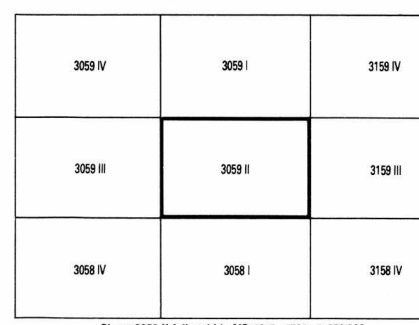
LEGEND SIGNOS CONVENCIONALES

Legend for populated places, roads, streams, railroads, and boundaries. Includes symbols for buildings, roads, rivers, and administrative lines.

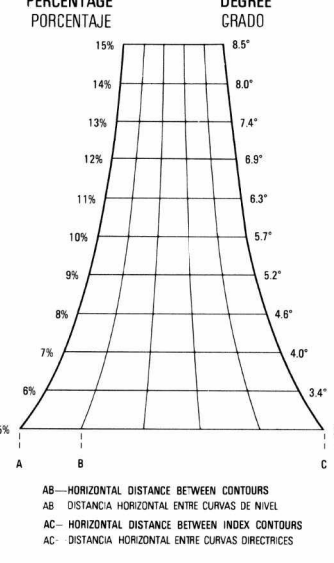
BOUNDARIES LÍMITES



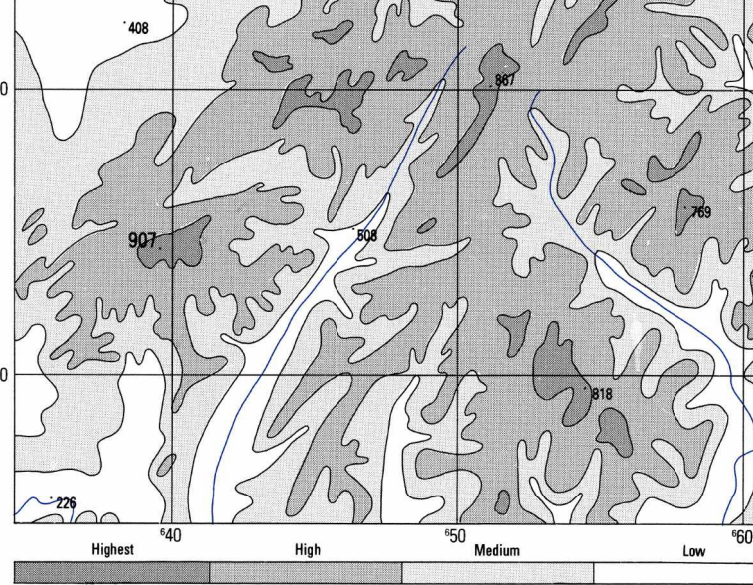
ADJOINING SHEETS HOJAS ADYACENTES



SLOPE GUIDE GUÍA DE PENDIENTES



ELEVATION GUIDE GUÍA DE ELEVACIÓN



LIMITED DISTRIBUTION

Restrictions on distribution and reproduction of the map. Includes contact information for the Defense Mapping Agency.