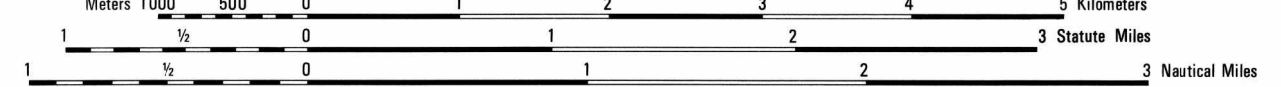


Prepared and published by the Defense Mapping Agency Hydrographic/Topographic Center, Washington, D.C. REVISED IN 1986 FROM BEST AVAILABLE SOURCES

NOTES

ON THIS MAP A LINE IS GENERALLY CONSIDERED AS BEING 8-12 FEET (2.5-3.8 METERS) WIDE. IN ESTE MAPA UNA LÍNEA TIENE GENERALMENTE UNA ANCHURA DE 8-12 PIES (2.5-3.8 METROS).

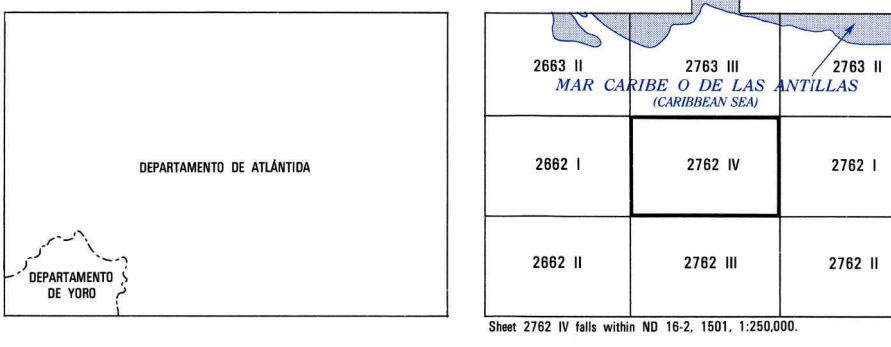
SCALE 1:50,000



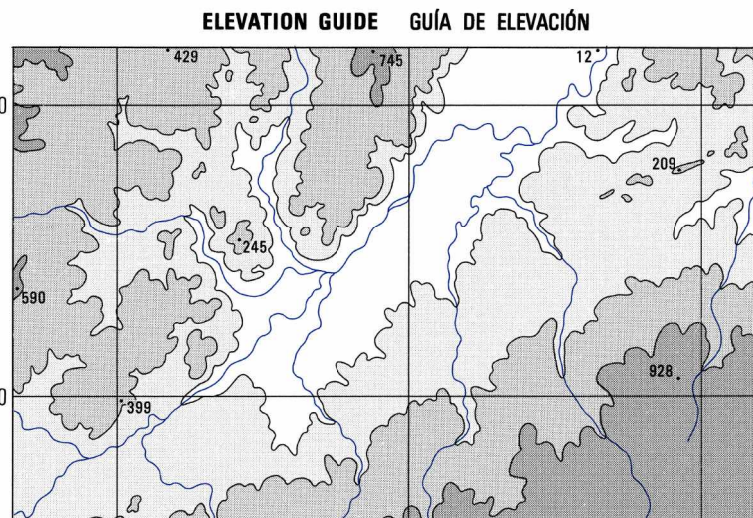
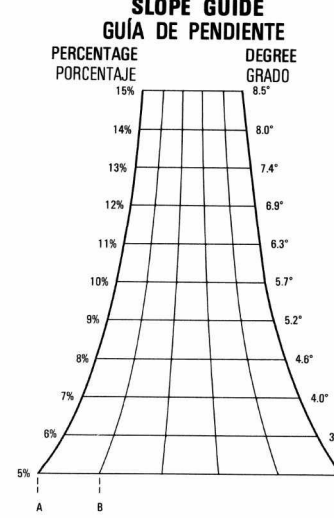
ELEVATIONS IN METERS

CONTOUR INTERVAL 20 METERS INTERVALO DE CURVAS 20 METROS

BOUNDARIES LIMITES



LIMITED DISTRIBUTION Distribution authorized to DoD, IAW to E.O. 11652, 11653, 11654, 11655, 11656, 11657, 11658, 11659, 11660, 11661, 11662, 11663, 11664, 11665, 11666, 11667, 11668, 11669, 11670, 11671, 11672, 11673, 11674, 11675, 11676, 11677, 11678, 11679, 11680, 11681, 11682, 11683, 11684, 11685, 11686, 11687, 11688, 11689, 11690, 11691, 11692, 11693, 11694, 11695, 11696, 11697, 11698, 11699, 11700, 11701, 11702, 11703, 11704, 11705, 11706, 11707, 11708, 11709, 11710, 11711, 11712, 11713, 11714, 11715, 11716, 11717, 11718, 11719, 11720, 11721, 11722, 11723, 11724, 11725, 11726, 11727, 11728, 11729, 11730, 11731, 11732, 11733, 11734, 11735, 11736, 11737, 11738, 11739, 11740, 11741, 11742, 11743, 11744, 11745, 11746, 11747, 11748, 11749, 11750, 11751, 11752, 11753, 11754, 11755, 11756, 11757, 11758, 11759, 11760, 11761, 11762, 11763, 11764, 11765, 11766, 11767, 11768, 11769, 11770, 11771, 11772, 11773, 11774, 11775, 11776, 11777, 11778, 11779, 11780, 11781, 11782, 11783, 11784, 11785, 11786, 11787, 11788, 11789, 11790, 11791, 11792, 11793, 11794, 11795, 11796, 11797, 11798, 11799, 11800, 11801, 11802, 11803, 11804, 11805, 11806, 11807, 11808, 11809, 11810, 11811, 11812, 11813, 11814, 11815, 11816, 11817, 11818, 11819, 11820, 11821, 11822, 11823, 11824, 11825, 11826, 11827, 11828, 11829, 11830, 11831, 11832, 11833, 11834, 11835, 11836, 11837, 11838, 11839, 11840, 11841, 11842, 11843, 11844, 11845, 11846, 11847, 11848, 11849, 11850, 11851, 11852, 11853, 11854, 11855, 11856, 11857, 11858, 11859, 11860, 11861, 11862, 11863, 11864, 11865, 11866, 11867, 11868, 11869, 11870, 11871, 11872, 11873, 11874, 11875, 11876, 11877, 11878, 11879, 11880, 11881, 11882, 11883, 11884, 11885, 11886, 11887, 11888, 11889, 11890, 11891, 11892, 11893, 11894, 11895, 11896, 11897, 11898, 11899, 11900, 11901, 11902, 11903, 11904, 11905, 11906, 11907, 11908, 11909, 11910, 11911, 11912, 11913, 11914, 11915, 11916, 11917, 11918, 11919, 11920, 11921, 11922, 11923, 11924, 11925, 11926, 11927, 11928, 11929, 11930, 11931, 11932, 11933, 11934, 11935, 11936, 11937, 11938, 11939, 11940, 11941, 11942, 11943, 11944, 11945, 11946, 11947, 11948, 11949, 11950, 11951, 11952, 11953, 11954, 11955, 11956, 11957, 11958, 11959, 11960, 11961, 11962, 11963, 11964, 11965, 11966, 11967, 11968, 11969, 11970, 11971, 11972, 11973, 11974, 11975, 11976, 11977, 11978, 11979, 11980, 11981, 11982, 11983, 11984, 11985, 11986, 11987, 11988, 11989, 11990, 11991, 11992, 11993, 11994, 11995, 11996, 11997, 11998, 11999, 12000



Legend table with symbols for roads, railroads, streams, and other features. Includes 'SIGNOS CONVENCIONALES' and 'GLOSSARIO'.

Tables for grid square identification and reporting. Includes 'SAMPLE 1,000 METER GRID SQUARE IDENTIFICATION' and '100 METER REFERENCE'.

TO CONVERT A MAGNETIC AZIMUTH TO A GRID AZIMUTH... TO CONVERT A GRID AZIMUTH TO A MAGNETIC AZIMUTH...