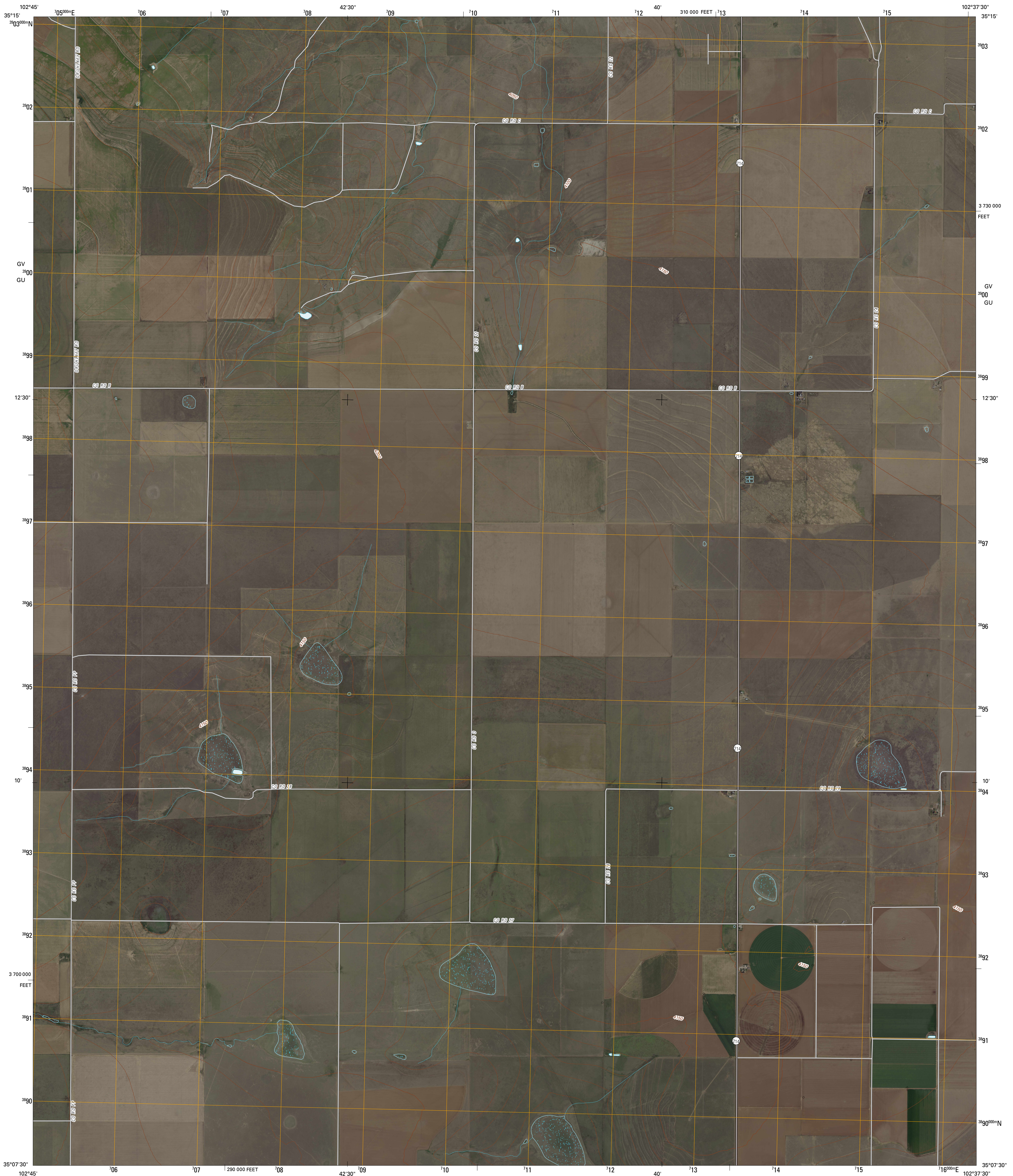




U.S. DEPARTMENT OF THE INTERIOR
U. S. GEOLOGICAL SURVEY

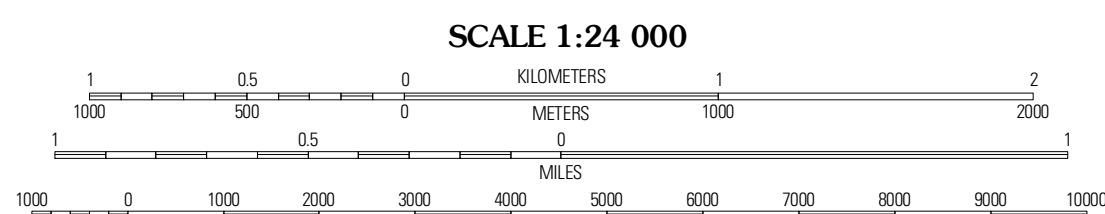
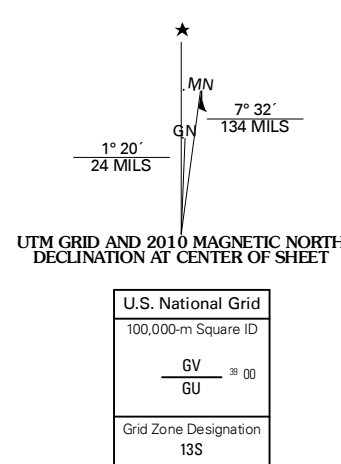


SIMMS NW QUADRANGLE
TEXAS
7.5-MINUTE SERIES



Produced by the United States Geological Survey
North American Datum of 1983 (NAD83)
World Geodetic System of 1984 (WGS84). Projection and
1 000-meter grid, Universal Transverse Mercator, Zone 13S
10 000-foot ticks: Texas Coordinate System of 1983
(north zone)

Imagery:.....NAIP, August 2008
Roads:.....US Census Bureau TIGER data
with limited USGS updates, 2005
Names:.....GNIS, 2008
Hydrography:.....National Hydrography Dataset, 1995
Contours:.....National Elevation Dataset, 2002



SCALE 1:24 000

CONTOUR INTERVAL 10 FEET

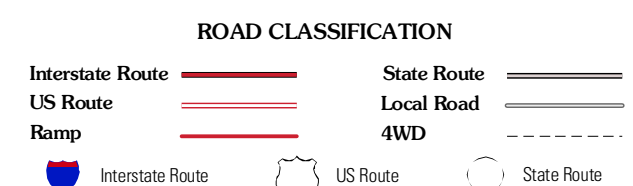
This map was produced to conform with version 0.5.10 of the
draft USGS Standards for 7.5-Minute Quadrangle Maps.
A metadata file associated with this product is also draft version 0.5.10



QUADRANGLE LOCATION

Signal Spring SE	Adrian	Landergin
Boise	Simms NW	Simms NE
Norton Lake	Simms	Overstreet Lake

ADJOINING 7.5' QUADRANGLES
TX 35102-213



SIMMS NW, TX
2010