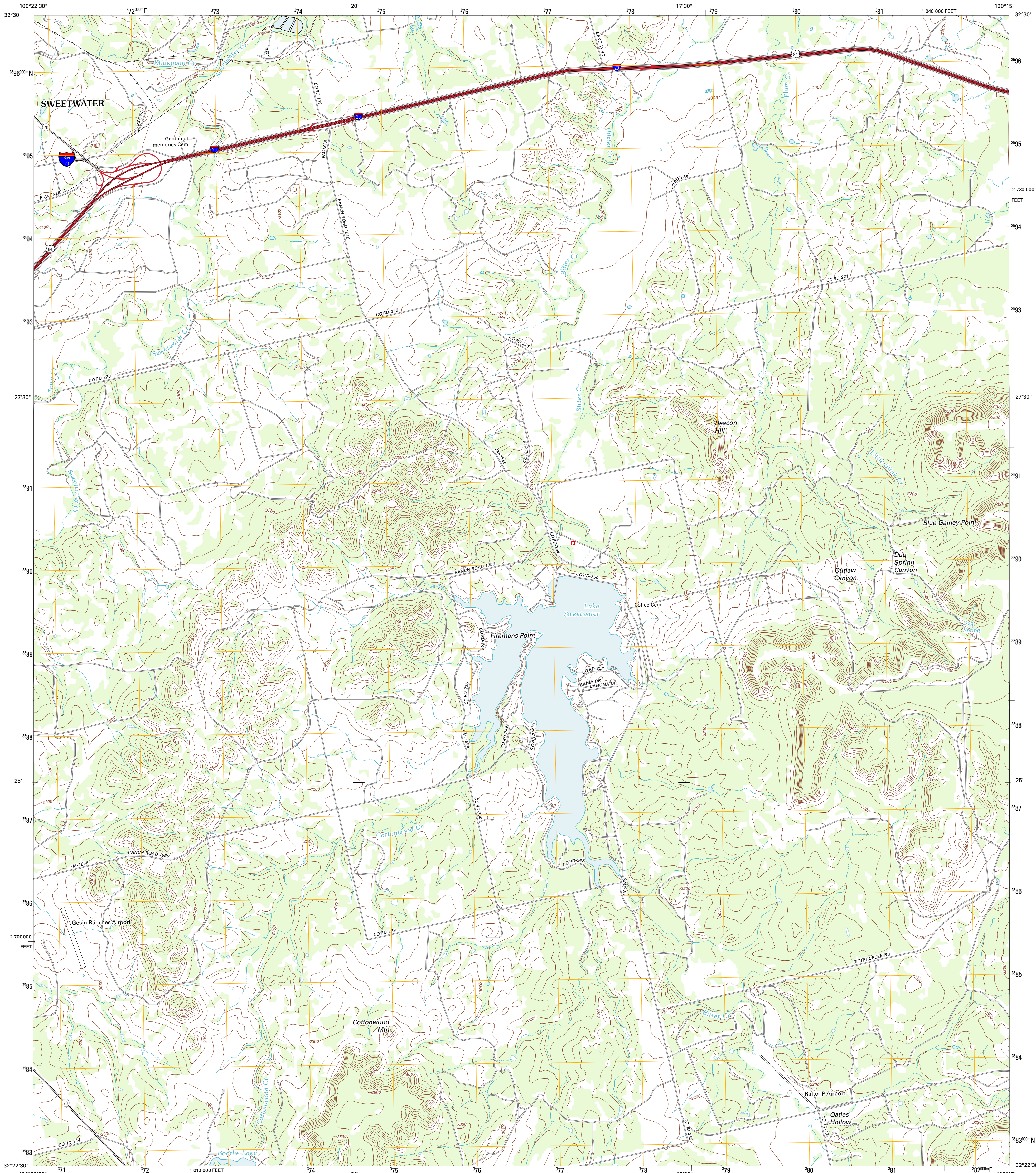




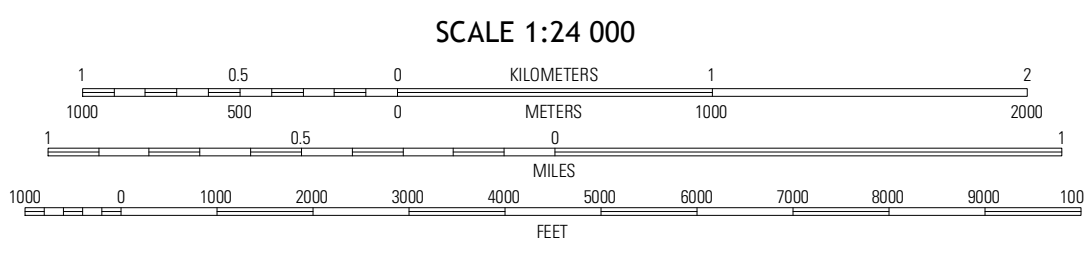
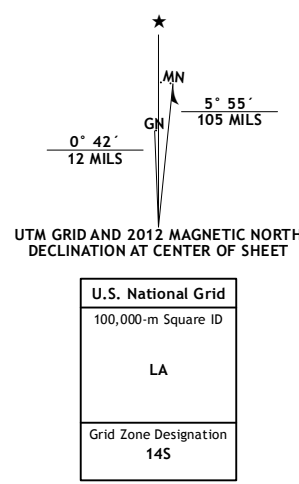
U.S. DEPARTMENT OF THE INTERIOR
U. S. GEOLOGICAL SURVEY



LAKE SWEETWATER QUADRANGLE
TEXAS-NOLAN CO.
7.5-MINUTE SERIES



Produced by the United States Geological Survey
North American Datum of 1983 (NAD83)
World Geodetic System of 1984 (WGS84). Projection and
1 000-meter grid: Universal Transverse Mercator, Zone 14S
10 000-foot ticks: Texas Coordinate System of 1983 (north
central zone)



CONTOUR INTERVAL 20 FEET
NORTH AMERICAN VERTICAL DATUM OF 1988
This map was produced to conform with the
National Geospatial Program US Topo Product Standard, 2011.
A metadata file associated with this product is draft version 0.6.7



QUADRANGLE LOCATION

Busby	Ekota	Raven Creek South
Sweetwater	Lake Sweetwater	Chalk Peak
Lake Trammel	Holder Creek	Nolan

ROAD CLASSIFICATION

Interstate Route	State Route
US Route	Local Road
Ramp	4WD

LAKE SWEETWATER, TX
2012

ADJOINING 7.5 QUADRANGLES