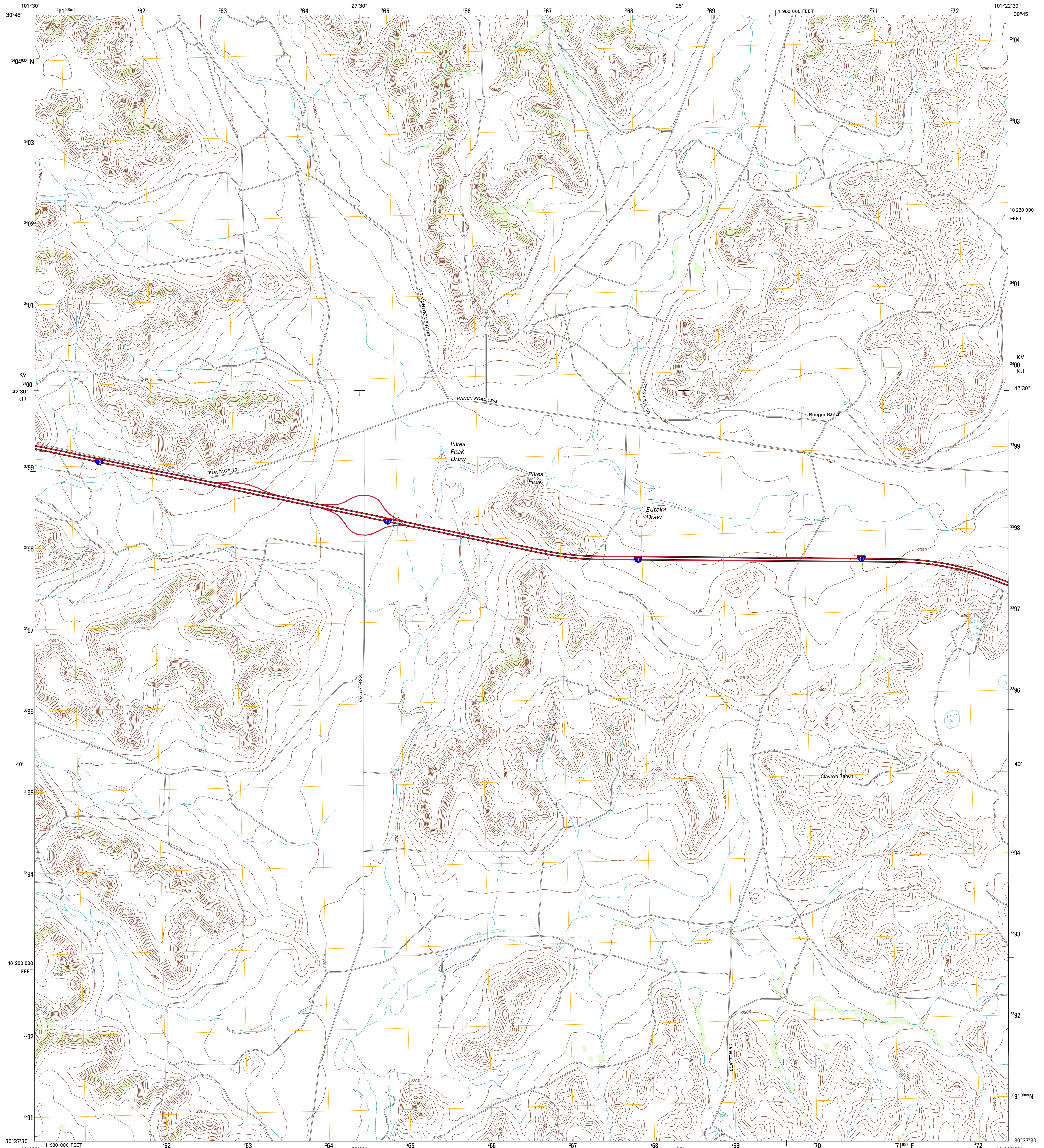




U.S. DEPARTMENT OF THE INTERIOR
U. S. GEOLOGICAL SURVEY

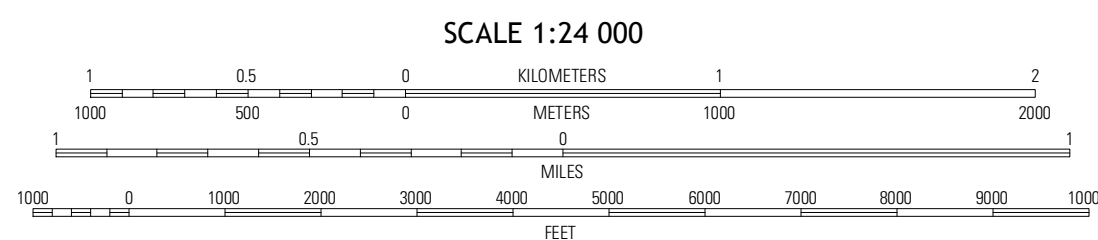
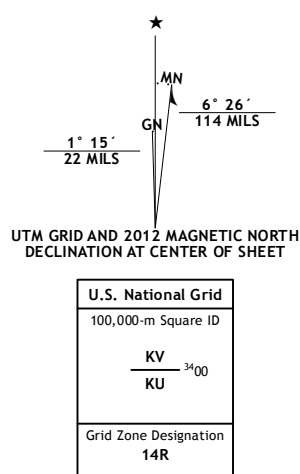


PIKES PEAK QUADRANGLE
TEXAS-CROCKETT CO.
7.5-MINUTE SERIES



Produced by the United States Geological Survey
North American Datum of 1983 (NAD83)
World Geodetic System of 1984 (WGS84). Projection and
1 000-meter grid: Universal Transverse Mercator, Zone 14B
10 000-foot ticks: Texas Coordinate System of 1983 (central
zone)

Imagery.....NAIP, May 2010
Roads.....©2006-2012 TomTom
Names.....GNIS, 2012
Hydrography.....National Hydrography Dataset, 2010
Contours.....National Elevation Dataset, 2006
Boundaries.....Census, IBWC, IBC, USGS, 1972 - 2012



CONTOUR INTERVAL 20 FEET
NORTH AMERICAN VERTICAL DATUM OF 1988
This map was produced to conform with the
National Geospatial Program US Topo Product Standard, 2011.
A metadata file associated with this product is draft version 0.6.7



QUADRANGLE LOCATION

Owens Creek SE	Schaeman Draw SW	Schaeman Draw SE
Bachelor Hill	Pikes Peak	Mitchell Canyon NE
Burnt Canyon	Mitchell Canyon	Hunt Ranch

ROAD CLASSIFICATION

Interstate Route	State Route
US Route	Local Road
Ramp	4WD

PIKES PEAK, TX
2012

ADJOINING 7.5 QUADRANGLES