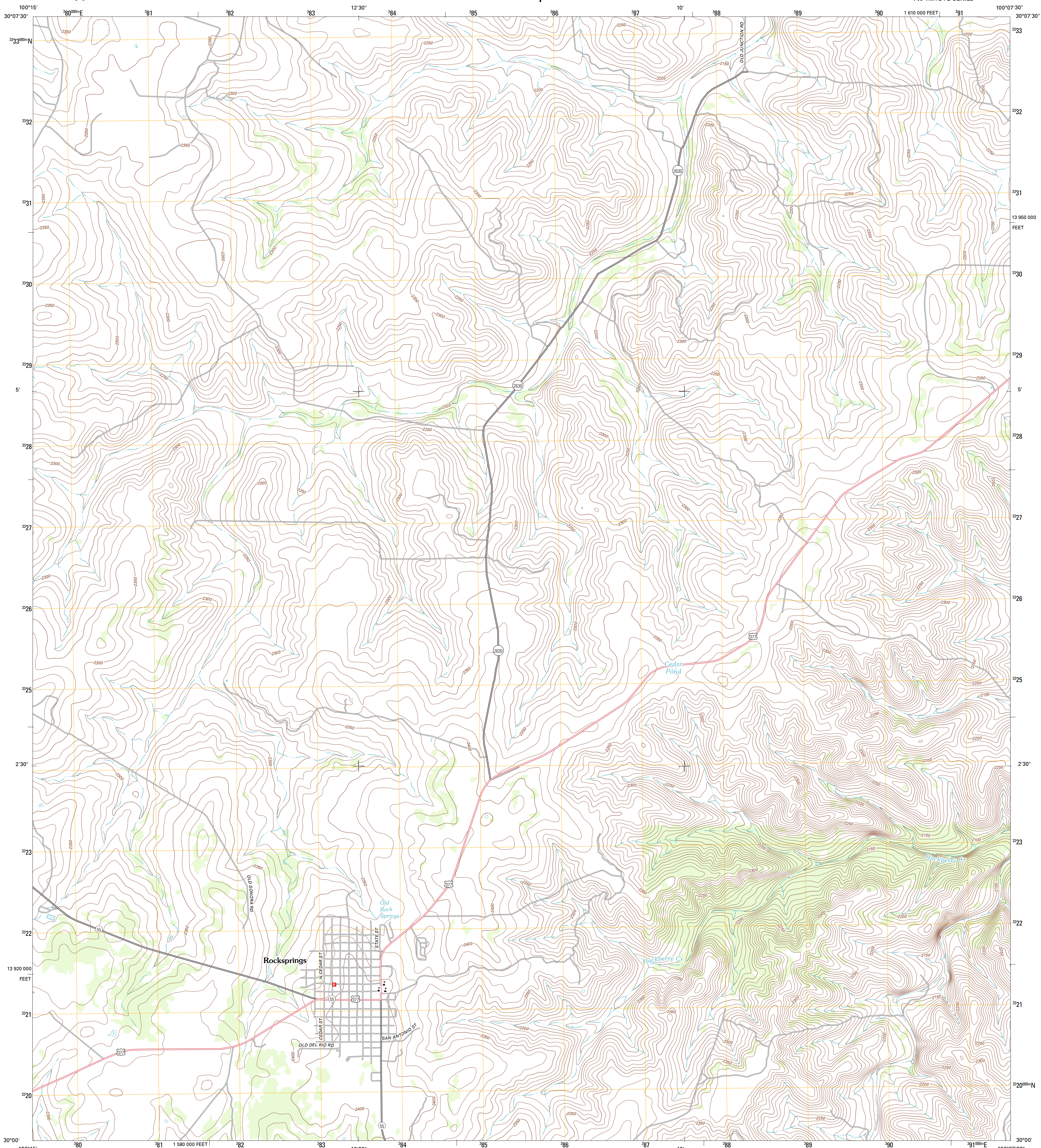




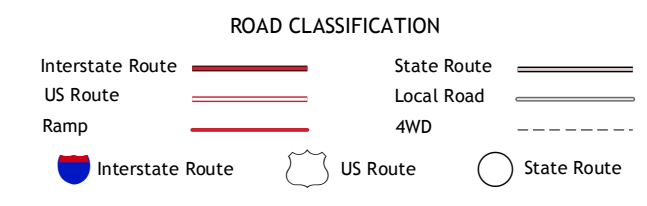
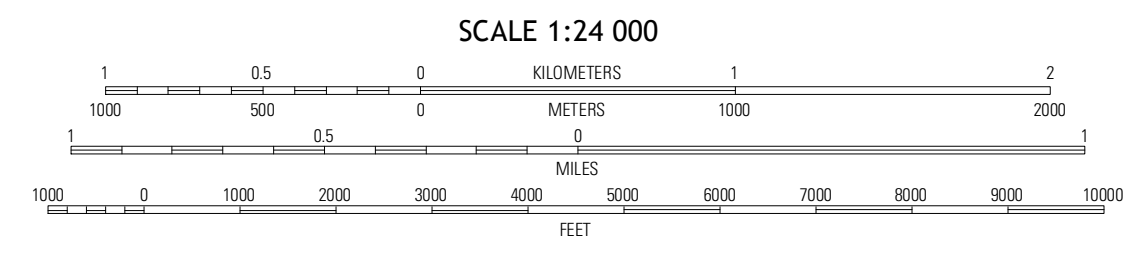
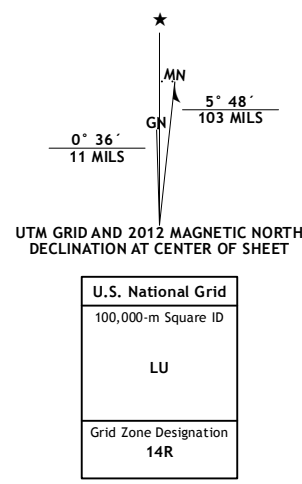
U.S. DEPARTMENT OF THE INTERIOR  
U. S. GEOLOGICAL SURVEY



ROCKSPRINGS QUADRANGLE  
TEXAS-EDWARDS CO.  
7.5-MINUTE SERIES



Produced by the United States Geological Survey  
North American Datum of 1983 (NAD83)  
World Geodetic System of 1984 (WGS84). Projection and  
1 000-meter grid: Universal Transverse Mercator, Zone 14R  
10 000-foot ticks: Texas Coordinate System of 1983 (south  
central zone)



QUADRANGLE LOCATION

Ray Lake	Elbow Lake	Point Rock Spring
Ray Lake SE	<b>Rocksprings</b>	Devils Sinkhole
Indian Creek NE	Cub Lake	Hackberry

Imagery.....NAIP, May 2010  
Roads.....©2006-2012 TomTom  
Names.....©2012  
Hydrography.....National Hydrography Dataset, 2010  
Contours.....National Elevation Dataset, 2006  
Boundaries.....Census, IBW, IBC, USGS, 1972 - 2012

CONTOUR INTERVAL 10 FEET  
NORTH AMERICAN VERTICAL DATUM OF 1988  
This map was produced to conform with the  
National Geospatial Program US Topo Product Standard, 2011.  
A metadata file associated with this product is draft version 0.6.7

ROCKSPRINGS, TX  
2012